



GIET SCHOOL OF PHARMACY

(SRI KOUNDINYA EDUCATIONAL SOCIETY)

(Affiliated to Andhra University, Approved by AICTE & PCI)

NH-16, Chaitanya Knowledge City, **RAJAMAHENDRAVARAM** - 533 296. E.G.District., (A.P.)

Tel : 0883 - 2484444, E-mail : gietpharmacy@gmail.com, Website : www.gietpharmacy.in

CLASSROOM



LAB



PRINCIPAL.

GIET SCHOOL OF PHARMACY,

N.H-16, Chaitanya Knowledge City,

RAJAMUNDRY - 533 296



GIET SCHOOL OF PHARMACY

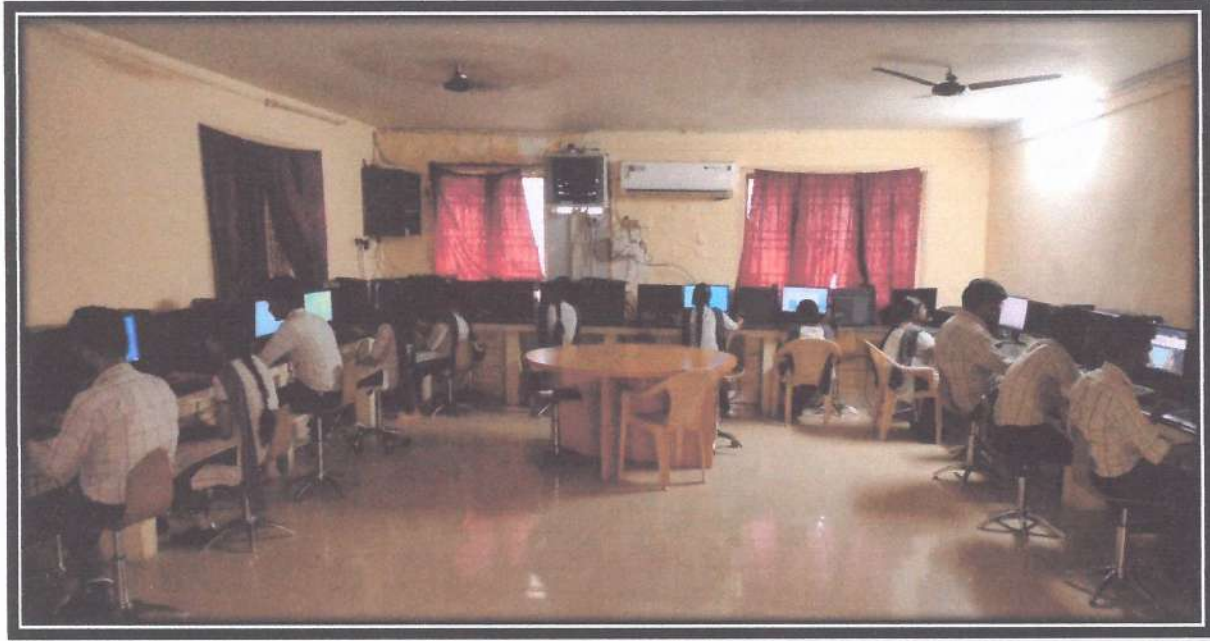
(SRI KOUNDINYA EDUCATIONAL SOCIETY)

(Affiliated to Andhra University, Approved by AICTE & PCI)

NH-16, Chaitanya Knowledge City, **RAJAMAHENDRAVARAM** - 533 296. E.G.District., (A.P.)

Tel : 0883 - 2484444, E-mail : gietpharmacy@gmail.com, Website : www.gietpharmacy.in

COMPUTER LAB



SEMINAR HALL



PRINCIPAL.

GIET SCHOOL OF PHARMACY,

N.H-16, Chaitanya Knowledge City,

RAJAMUNDRY - 533 296



GIET SCHOOL OF PHARMACY

(SRI KOUNDINYA EDUCATIONAL SOCIETY)

(Affiliated to Andhra University, Approved by AICTE & PCI)

NH-16, Chaitanya Knowledge City, **RAJAMAHENDRAVARAM** - 533 296. E.G.District., (A.P.)

Tel : 0883 - 2484444, E-mail : gietpharmacy@gmail.com, Website : www.gietpharmacy.in

PARKING



LIBRARY



PRINCIPAL.

GIET SCHOOL OF PHARMACY,
NH-16, Chaitanya Knowledge City
RAJAMUNDRY - 533 296



GIET SCHOOL OF PHARMACY

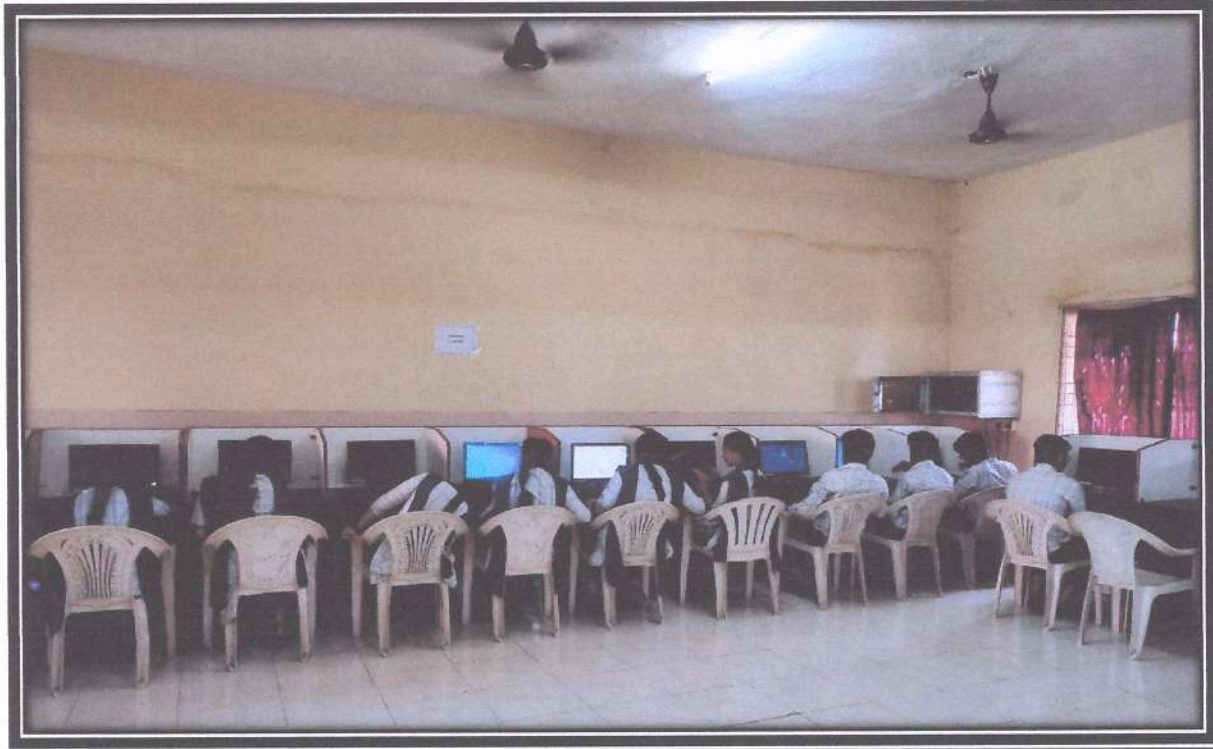
(SRI KOUNDINYA EDUCATIONAL SOCIETY)

(Affiliated to Andhra University, Approved by AICTE & PCI)

NH-16, Chaitanya Knowledge City, **RAJAMAHENDRAVARAM** - 533 296. E.G.District., (A.P.)


Tel : 0883 - 2484444, E-mail : gietpharmacy@gmail.com, Website : www.gietpharmacy.in

E-RESOURCE LAB



RESIDENCE




PRINCIPAL,
GIET SCHOOL OF PHARMACY,
NH-16, Chaitanya Knowledge City
RAJAMUNDRY - 533 296



GIET SCHOOL OF PHARMACY

(SRI KOUNDINYA EDUCATIONAL SOCIETY)

(Affiliated to Andhra University, Approved by AICTE & PCI)

NH-16, Chaitanya Knowledge City, **RAJAMAHENDRAVARAM** - 533 296. E.G.District.. (A.P.)

Tel : 0883 - 2484444, E-mail : gietpharmacy@gmail.com, Website : www.gietpharmacy.in

CULTURALS



KARATE



PRINCIPAL.

GIET SCHOOL OF PHARMACY,
NH-16, Chaitanya Knowledge City
RAJAHMUNDRY - 533 296



GIET SCHOOL OF PHARMACY

(SRI KOUNDINYA EDUCATIONAL SOCIETY)

(Affiliated to Andhra University, Approved by AICTE & PCI)

NH-16, Chaitanya Knowledge City, **RAJAMAHENDRAVARAM** - 533 296. E.G.District., (A.P.)

Tel : 0883 - 2484444, E-mail : gietpharmacy@gmail.com, Website : www.gietpharmacy.in

CRICKET



THROWBALL



PRINCIPAL.

GIET SCHOOL OF PHARMACY,
NH-16, Chaitanya Knowledge City
RAJAMUNDRY - 533 296



GIET SCHOOL OF PHARMACY

(SRI KOUNDINYA EDUCATIONAL SOCIETY)

(Affiliated to Andhra University, Approved by AICTE & PCI)

NH-16, Chaitanya Knowledge City, **RAJAMAHENDRAVARAM** - 533 296. E.G.District., (A.P.)
Tel : 0883 - 2484444, E-mail : gietpharmacy@gmail.com, Website : www.gietpharmacy.in

GYM



TRANSPORT



PRINCIPAL.

GIET SCHOOL OF PHARMACY,
NH-16, Chaitanya Knowledge City
RAJAHMUNDRY - 533 296



GIET SCHOOL OF PHARMACY

(SRI KOUNDINYA EDUCATIONAL SOCIETY)

(Affiliated to Andhra University, Approved by AICTE & PCI)

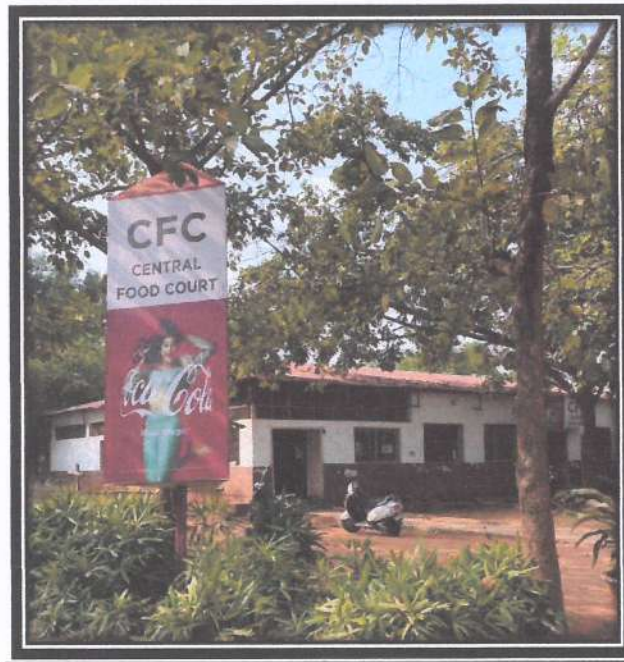
NH-16, Chaitanya Knowledge City, **RAJAMAHENDRAVARAM** - 533 296. E.G.District., (A.P.)

Tel : 0883 - 2484444, E-mail : gietpharmacy@gmail.com, Website : www.gietpharmacy.in

CLINIC



CANTEEN



PRINCIPAL.

GIET SCHOOL OF PHARMACY,
NH-16, Chaitanya Knowledge City
RAJAHMUNDRY - 533 296



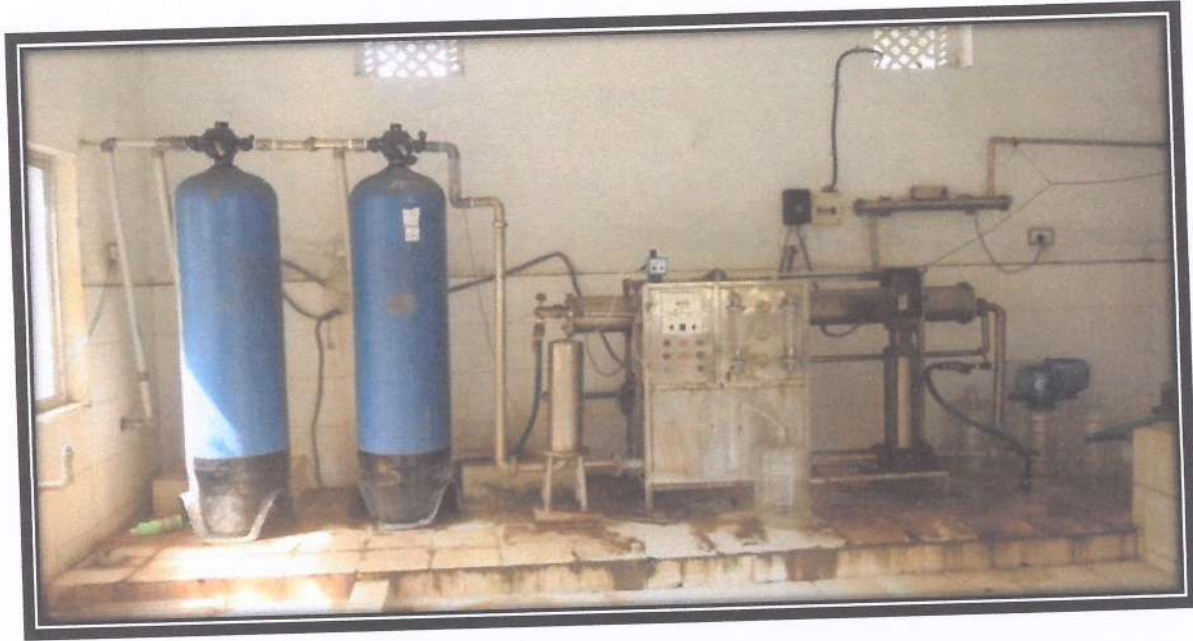
GIET SCHOOL OF PHARMACY

(SRI KOUNDINYA EDUCATIONAL SOCIETY)

(Affiliated to Andhra University, Approved by AICTE & PCI)

NH-16, Chaitanya Knowledge City, **RAJAMAHENDRAVARAM** - 533 296. E.G.District., (A.P.)
Tel : 0883 - 2484444, E-mail : gietpharmacy@gmail.com, Website : www.gietpharmacy.in

MINERAL WATER PLANT



ATM



PRINCIPAL,
GIET SCHOOL OF PHARMACY,
NH-16, Chaitanya Knowledge City
RAJAMUNDRY - 533 296